



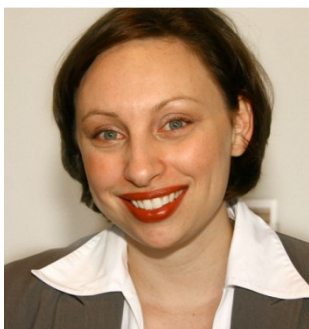
## Managing Generations in the Workplace

### How do you work with generational differences to effectively manage your team and improve performance?

This interactive session will assist leaders and managers to understand generational characteristics and use this knowledge to help with communicating, implementing change and motivating individuals and teams.

The session will cover:

- The needs and drivers of each generation
- What can we do to better manage each generation
- How useful is the generation paradigm
- How to avoid conflict between the generations and get them working together



#### The Facilitator

Rebecca Cushway is a workplace psychologist and Managing Director of Careers Excelled. Rebecca has 15 years experience working with corporate organizations throughout Australia on Cultural Change, Leadership Development, Team Building, Talent Management and a range of learning and development programs across industries.

#### Session Details

Date:

Friday 18<sup>th</sup> November 2011

Location:

The Grace Hotel  
77 York Street, Sydney

Choice of two sessions:

##### Session 1

8.45am arrival for 9.00am start.

The session will conclude at 11.15am

or

##### Session 2

12.45pm arrival for 1.00pm start.

The session will conclude at 3.00pm

Attendance at the forum is complimentary and will include light refreshments.

Please RSVP to:

Denise Eriksson on 02 9200 3689 or  
deriksson@dfp.com.au

**by 11 November 2011**

[www.dfp.com.au](http://www.dfp.com.au)