



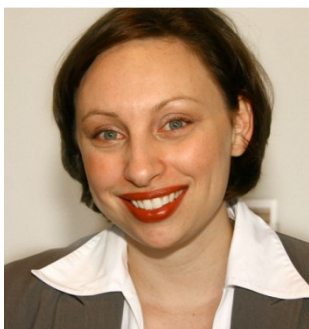
Managing Generations in the Workplace

How do you work with generational differences to effectively manage your team and improve performance?

This interactive session will assist leaders and managers to understand generational characteristics and use this knowledge to help with communicating, implementing change and motivating individuals and teams.

The session will cover:

- The needs and drivers of each generation
- What can we do to better manage each generation
- How useful is the generation paradigm
- How to avoid conflict between the generations and get them working together



The Facilitator

Rebecca Cushway is a workplace psychologist and Managing Director of Careers Excelled. Rebecca has 15 years experience working with corporate organizations throughout Australia on Cultural Change, Leadership Development, Team Building, Talent Management and a range of learning and development programs across industries.

Session Details

Date:
Friday 23 September 2011

Location:
Brisbane Marriott Hotel
515 Queen St
Brisbane

Choice of two sessions:

Session 1

8.45am arrival for 9.00am start.
The session will conclude at 11.15am

or

Session 2

12.45pm arrival for 1.00pm start.
The session will conclude at 3.15pm

Attendance at the Forum is complimentary and will include morning tea for the 9am session and lunch for the 1pm session.

Please RSVP to:

Tom Hatch on 03 8632 9952 or
thatch@dfp.com.au
by 16 September 2011

www.dfp.com.au